

LDS INSTRUCTIONS

READ INSTRUCTIONS FULLY BEFORE ATTEMPTING TO OPERATE A LOAD CELL

INTRODUCTION

Compact, light weight mobile load cell's for use with soft connections.

Available with in built OLED readout or Bluetooth LE data transfer.

Bluetooth LE versions have no inbuilt read out and require pairing with another Bluetooth LE capable device such as a smart phone.

USE

Can safely work between any deck eye, pad eye, strong point, traveller car and block to measure loads.

Use to calibrate other load cells or pins by connecting in line

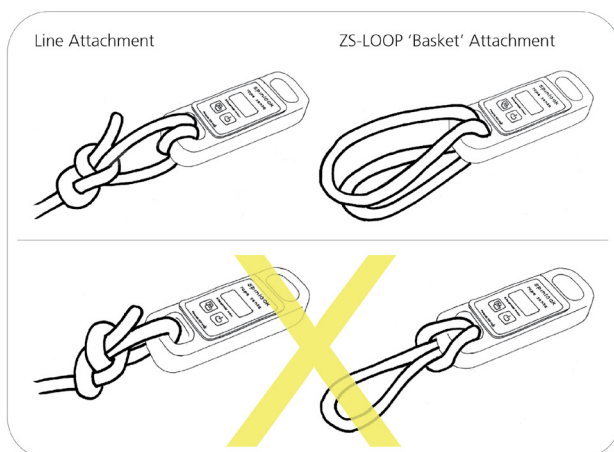
Use with ZS/OPEN mobile jammer, linked by a ZS/LOOP, to measure loads in any line.

The unit displays a continuous TRACKING load and PEAK load with a time reference.

OPERATING INSTRUCTION

Mount the load cell in the desired position.

Designed to use either ZS-LOOP attachment in a 'basket' formation or tied directly to sheets or halyards with one complete turn around the cell before termination.



BUTTON OPERATION

Press the MENU/ENTER button to show the menu. Use the ^v button to scroll though the menu. Use MENU/ENTER to make selection. Select BACK in the menu to return to the read out screen

POWER

Turn the cell on by holding down both buttons until the screen comes on. The cell will read load instantly and does not need to be 'unload' when turned on.

The OLED screen will update continuously or until the POWER SAVE mode starts if activated. In power save mode the unit continues to measure load and save the peak load. Press any button to bring the screen back to life.

To turn OFF select POWER OFF in the menu list.

OVERLOAD

If the screen changes from your selected colour to RED, in any mode, the unit has experienced a significant overload and will require re-calibration.

OVERLOADING 200% OF SWL WILL RESULT IN PERMANENTE DAMAGE TO LOAD CELL

A calibration certificate is issued with the product and valid for 12 months. The unit must be returned to Spinlock for re-calibration.

BATTERY LIFE

The 2 x AA batteries supplied with the unit will last between 50 and 1000 hours depending on the settings and screen modes. BLUE is the most efficient screen colour. Use SCREEN SAVER mode '1 minute', BRIGHTNESS 'low', and BLUE font for maximum battery life.

STORAGE WITH BATTERIES INSERTED CAN RESULT IN LEAKAGE AND UNREPAIRABLE DAMAGE.

BATTERY REPLACEMENT

To change the batteries carefully unscrew the 4 socket drive stainless steel bolts with 2mm Hex Key (Allen Key). Lift of the plastic battery cover and place down without disturbing the seal. Remove and replace the batteries taking note of the polarity marking. Check the 'O' ring seal is seated properly and re-lubricate if dry.

FAILURE TO MAINTAIN THE SEAL WILL RESULT IN WATER INGRESS & PERMANENT DAMAGE NOT COVERED UNDER WARRANTY.

Replace the plastic battery cover and carefully locate the 4 bolts, screw until the seal is compressed an even amount all round. Tighten to 0.5Nm. DO NOT OVER TIGHTEN THE SCREWS

SAFETY

Make sure any operator has read and understands the safe operation before commencing any test. Always check to use the cell is not dangerous or endangering the boat or people aboard. Improper mounting and use can result in inaccurate results and damage.

TECHNICAL DATA

Frequency	Sampling 20Hz, Screen Refresh 5Hz
Max Error Band	Linear 0.2% across full range deflection
Proof Load	150% of rated load
IP Rating	IP67 (Dust Tight, Immersible to 1m for 30 minutes)
Battery	2 x AA 1.5v
Battery Life	Minimum 50 hours
Temperature range	0 - 45 degrees Celsius (Strong direct Sun light will damage the OLED)
Body Alloy	2014T6 Aeronautical specification
Plastic	Delrin type
Screen	250 micron Lexan
Adhesive (Screen)	3M 467
Weight:	5 Tonne with Batteries 0.470kg (1.04lbs) 10 Tonne with Batteries 0.725kg (1.6lbs) Contact spt@spinlock.co.uk for custom weights
Dimensions (nominal)	LDS/5 160 x 65 x 30 LDS/10 185 x 85 x 30 Contact spt@spinlock.co.uk for custom dimensions

OTHER PRODUCTS IN THE RANGE:

LDS/5	5 Tonne load cell with inbuilt read out
LDS/10	10 Tonne load cell with inbuilt read out
LWS/5	5 Tonne Bluetooth load cell, no read out
LWS/10	10 Tonne Bluetooth load cell, no read out
ZS-LOOP/5	Loop for 5 tonne load cell
ZS-LOOP/10	Loop for 10 tonne load cell

Quick Start Guide

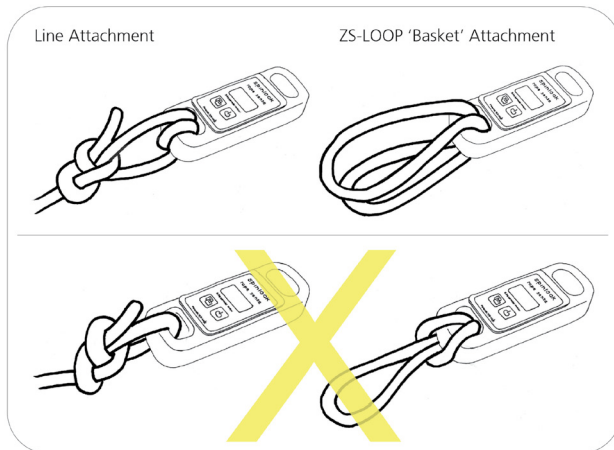
SAFETY

Make sure any operator has read and understands the full instructions for safe operation before commencing any test. Always check to use the cell is not dangerous or endangering the boat or people aboard. Improper mounting and use can result in inaccurate results and damage.

OPERATING INSTRUCTION

Use with ZS-LOOP or equivalent in basket formation.

Make one complete turn around the end eye and tie with a bowline for use with rope.



Quick Start Guide

SAFETY

Make sure any operator has read and understands the full instructions for safe operation before commencing any test. Always check to use the cell is not dangerous or endangering the boat or people aboard. Improper mounting and use can result in inaccurate results and damage.

OPERATING INSTRUCTION

Use with ZS-LOOP or equivalent in basket formation.

Make one complete turn around the end eye and tie with a bowline for use with rope.