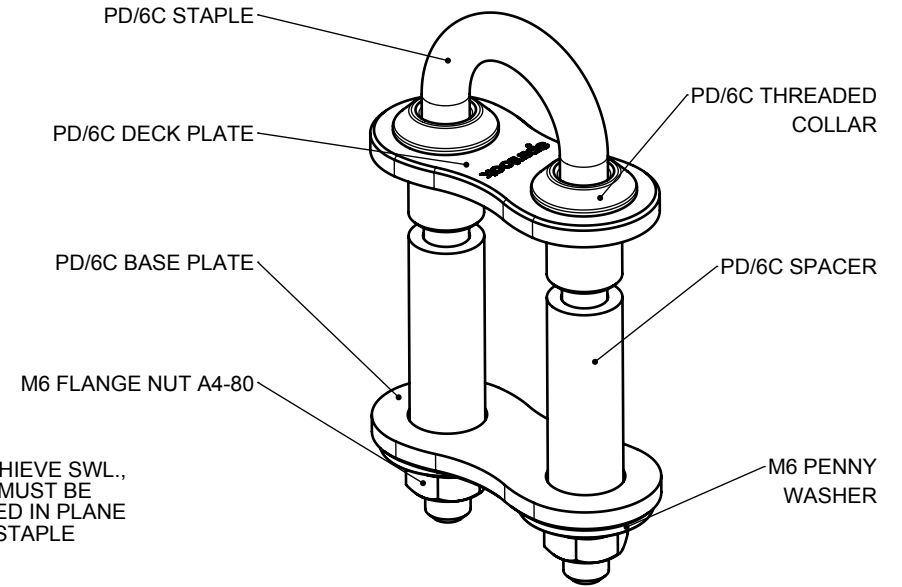


TO ACHIEVE SWL.,
LOAD MUST BE
APPLIED IN PLANE
WITH STAPLE



IMPORTANT:

ENSURE PLASTIC SPACERS PROTRUDE THROUGH UNDERSIDE OF DECK AND INTO BASE PLATE HOLES. IF REQUIRED, CUT PLASTIC SPACERS TO LENGTH.

SPACER LENGTH = DECK THICKNESS - 8MM

FOR DECKS LESS THAN 10MM THICK, DO NOT USE SPACERS.

ENSURE STAPLE HEIGHT DOES NOT EXCEED 24 MM ABOVE DECK.

ENSURE DECK PLATE SITS PERPENDICULAR TO STAPLE AXES.

DO NOT OVERTIGHTEN NUTS, MAX TORQUE = 7Nm

APPLY SEALANT/JOINTING COMPOUND BETWEEN THREADED COLLAR, DECK PLATE AND DECK.

spinlock
BE ADVENTURE-PROOF



WARNING:
IF USING AS TEMPLATE, ENSURE PRINTER SETTINGS ARE ADJUSTED TO ACCOUNT FOR THE DRAWING SCALE AND **ALWAYS** CHECK DIMENSIONS.



COPYRIGHT:
THIS DRAWING IS PROTECTED BY COPYRIGHT. ANY USE IS FORBIDDEN WITHOUT THE WRITTEN CONSENT OF SPINLOCK.

ALL DIMENSIONS IN MM

FASTENERS

WEIGHT

MAX LOAD

SCALE PAGE SIZE DATE

M6 x 2

75g

0° FROM VERTICAL, SWL = 2150KG
45° FROM VERTICAL, SWL = 1290KG
90° FROM VERTICAL, SWL = 1290KG

1:1

A4

APR
2018

PD/6C

FOR MORE INFO CONTACT
SPT@SPINLOCK.CO.UK